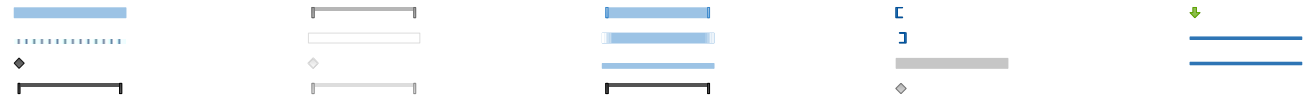
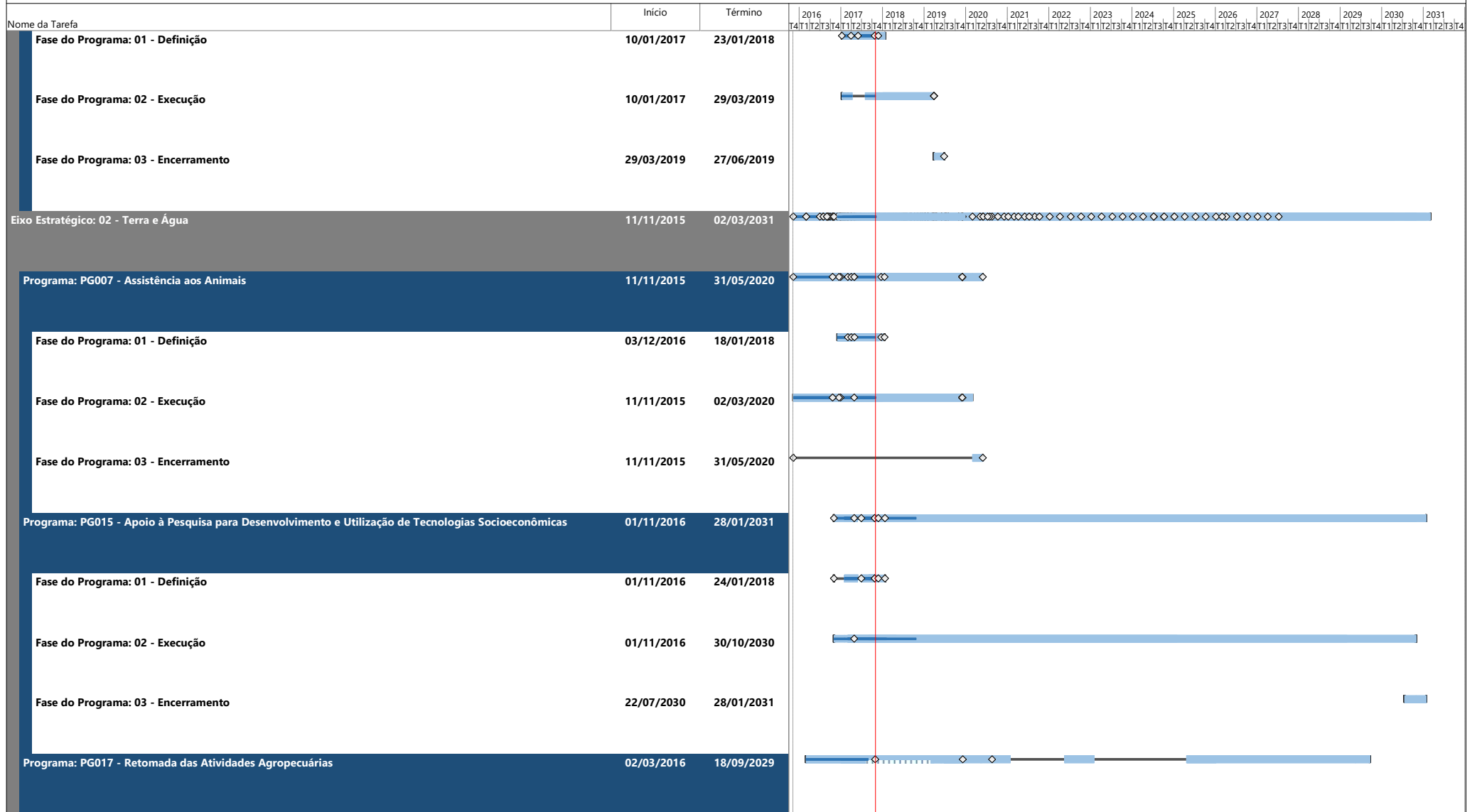
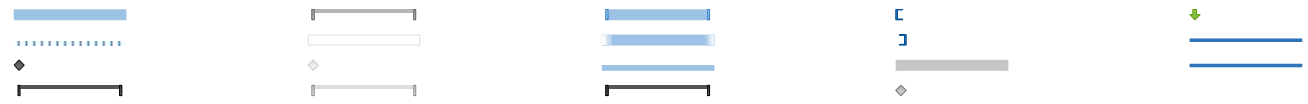
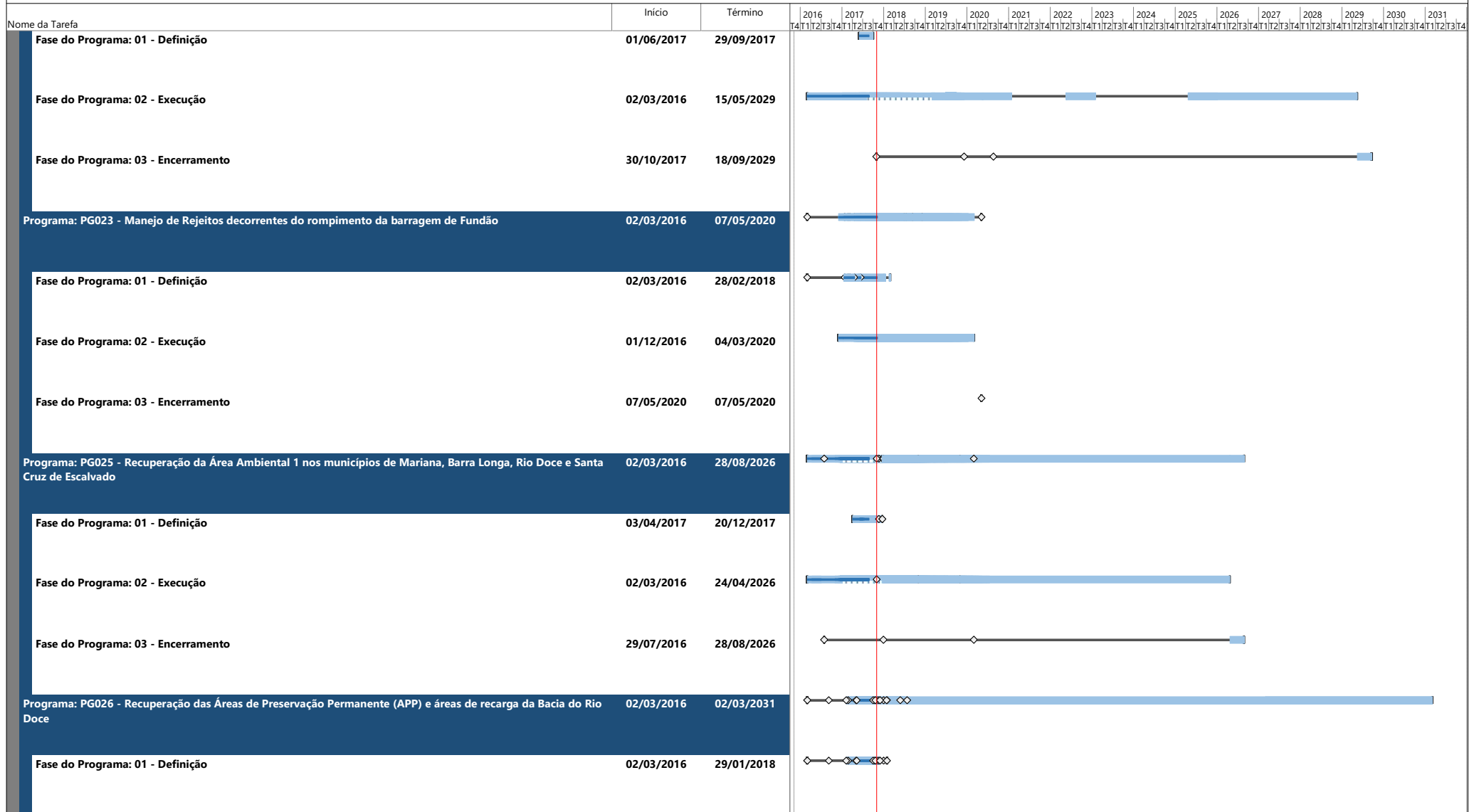


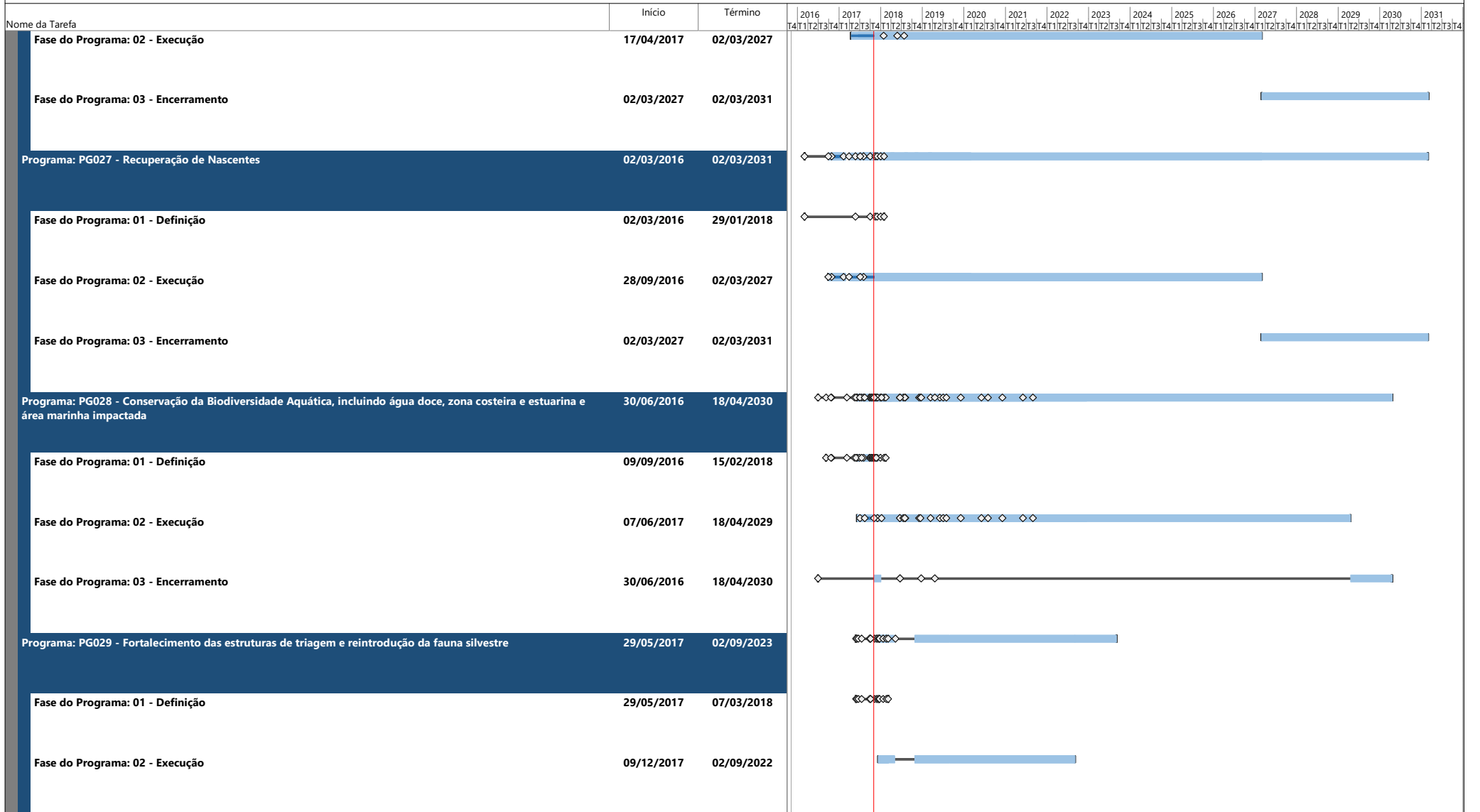
Nome da Tarefa	Início	Término	2016	2017	2018	2019	2020	2021	2022	2023	2024	2025	2026	2027	2028	2029	2030	2031	
Programa: PG034 - Preparação para as emergências ambientais	02/03/2016	01/08/2022	[Gantt bar from 2016 to 2022]																
Fase do Programa: 01 - Definição	02/03/2016	30/11/2017	[Gantt bar from 2016 to 2017]																
Fase do Programa: 02 - Execução	02/03/2016	03/05/2022	[Gantt bar from 2016 to 2022]																
Fase do Programa: 03 - Encerramento	03/05/2022	01/08/2022	[Gantt bar from 2022 to 2022]																
Programa: PG035 - Informação para a população da Área Ambiental 1	02/03/2016	01/06/2026	[Gantt bar from 2016 to 2026]																
Fase do Programa: 01 - Definição	02/03/2016	31/12/2017	[Gantt bar from 2016 to 2017]																
Fase do Programa: 02 - Execução	01/06/2016	03/03/2026	[Gantt bar from 2016 to 2026]																
Fase do Programa: 03 - Encerramento	03/03/2026	01/06/2026	[Gantt bar from 2026 to 2026]																
Programa: PG036 - Comunicação Nacional e Internacional	02/03/2016	31/05/2026	[Gantt bar from 2016 to 2026]																
Fase do Programa: 01 - Definição	02/03/2016	31/01/2018	[Gantt bar from 2016 to 2018]																
Fase do Programa: 02 - Execução	10/06/2016	02/03/2026	[Gantt bar from 2016 to 2026]																
Fase do Programa: 03 - Encerramento	02/03/2026	31/05/2026	[Gantt bar from 2026 to 2026]																
Programa: PG042 - Ressarcimento dos gastos públicos extraordinários dos Compromitentes	10/01/2017	27/06/2019	[Gantt bar from 2017 to 2019]																

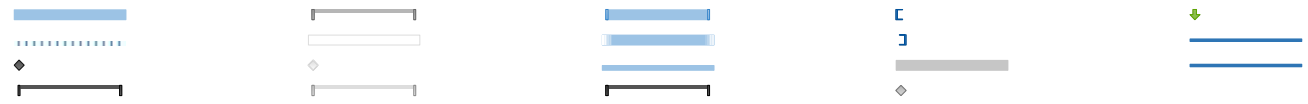
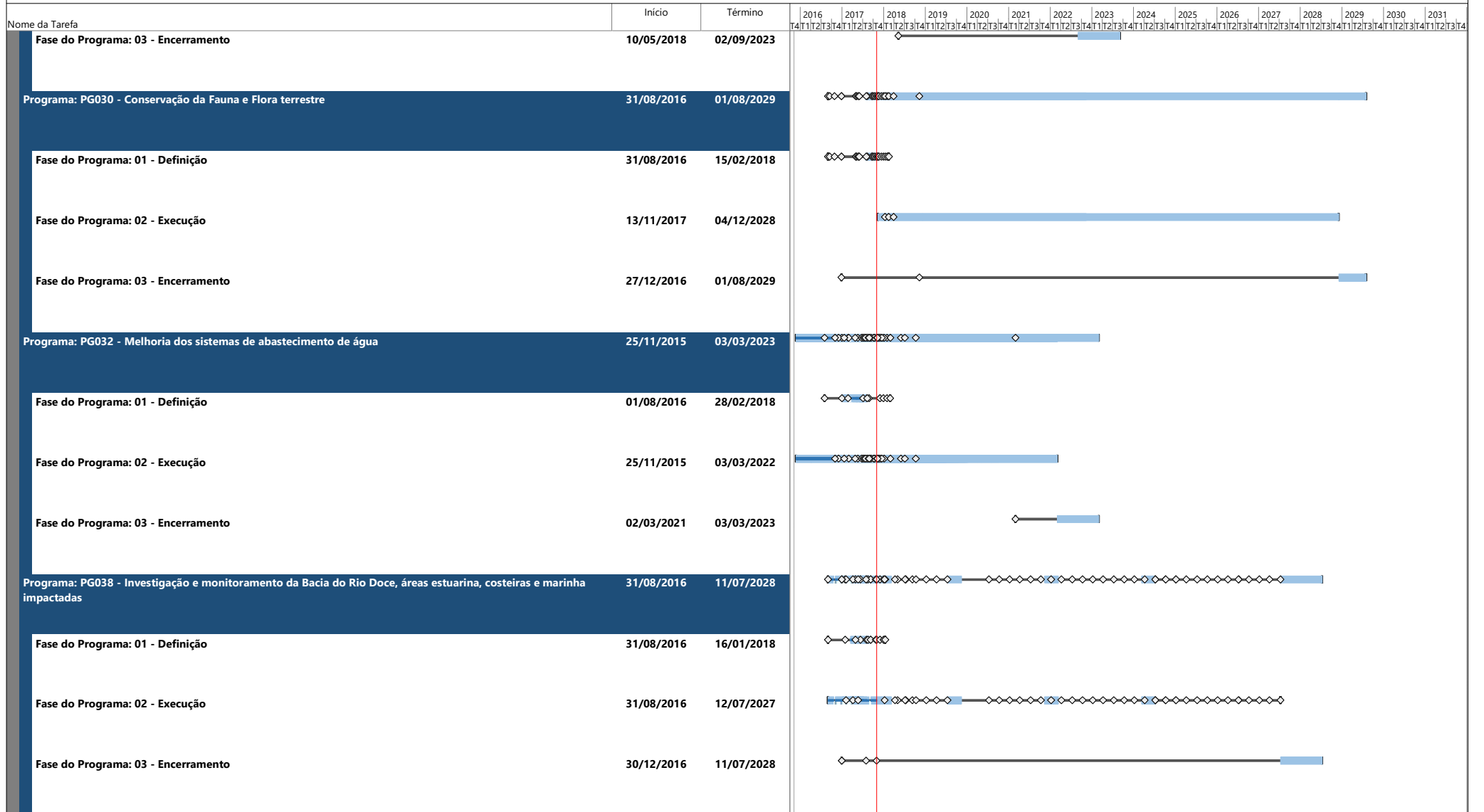
Legend for Gantt chart symbols:

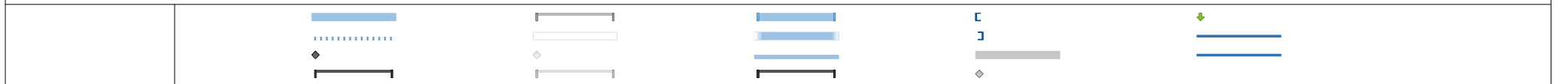
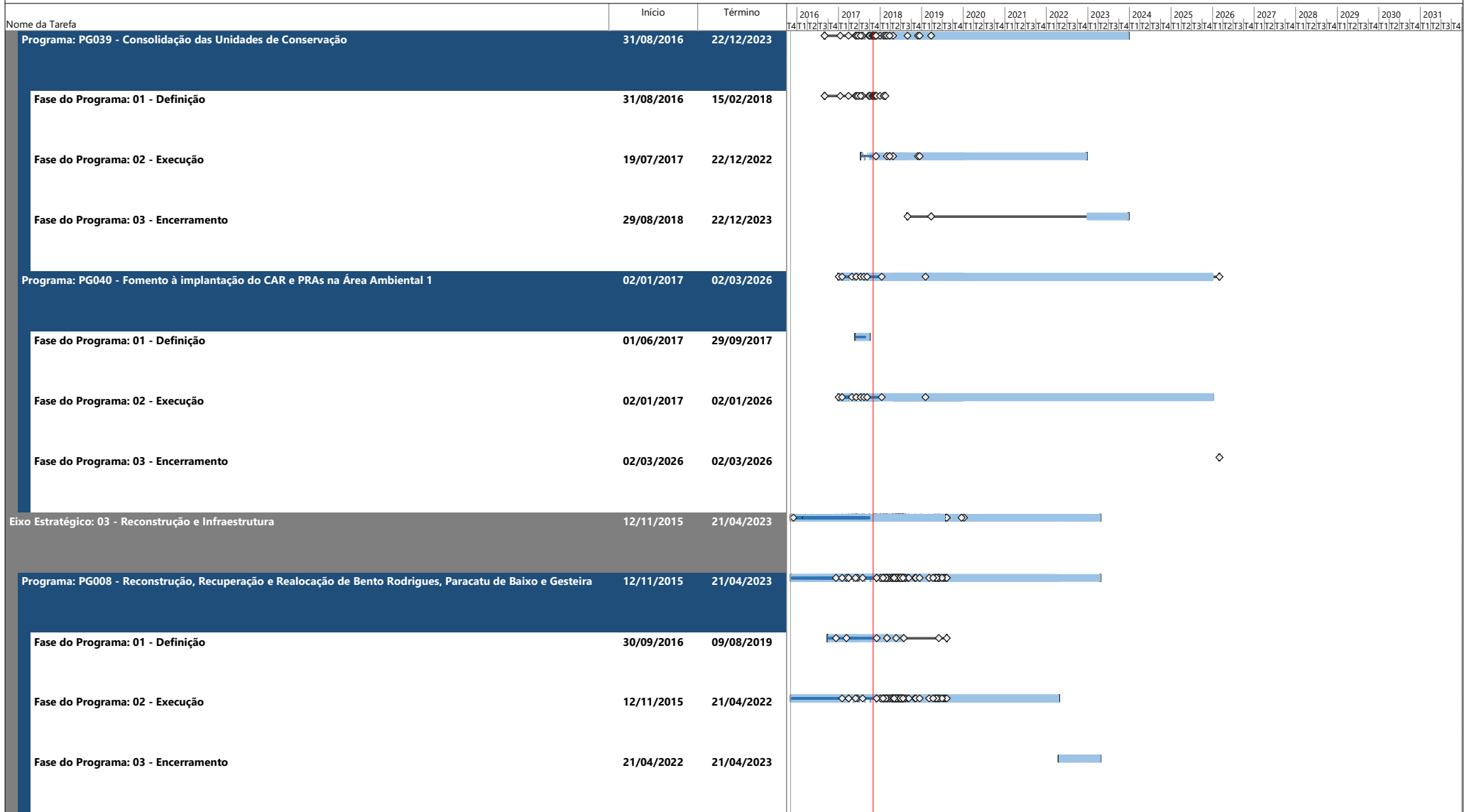
- [Solid blue bar]
- [Dotted blue bar]
- [Diamond marker]
- [Grey bar]
- [Bracketed bar]
- [Downward arrow]













Nome da Tarefa	Início	Término	2016	2017	2018	2019	2020	2021	2022	2023	2024	2025	2026	2027	2028	2029	2030	2031				
			T4	T1	T2	T3	T4	T1	T2	T3	T4	T1	T2	T3	T4	T1	T2	T3	T4	T1	T2	T3
Fase do Programa: 01 - Definição	20/03/2017	28/02/2018																				
Fase do Programa: 02 - Execução	31/12/2016	25/06/2021		◇	◇	◇	◇	◇	■													
Fase do Programa: 03 - Encerramento	28/12/2018	22/12/2022			◇	■																

